

UK INOX SPECIFICATIONS

MODEL D537.60.40

UNDERMOUNT TYPE

GENERAL

Fine quality sink bowl formed of 18 gauge
Type 304 18/10 nickel bearing stainless steel

DESIGN FEATURES

Bowl Depth: 10"

Large bowl with an 8" deep Small bowl

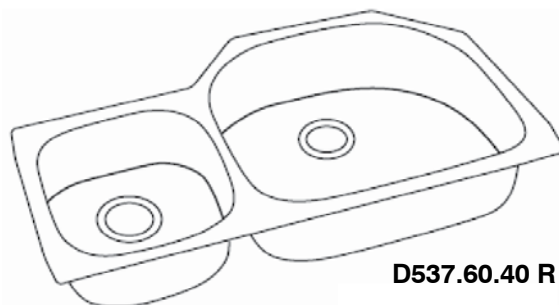
Finish: European Finish

Underside: Sound absorbing pads and special paint
applied to dampen sound

Drain Openings: 3-1/2"

Sinks include all basket strainers,
mounting hardware and template.

PROTECT YOUR SINK! Grids prolong the
life of your sink's finish.



D537.60.40 R

D537.60.40.10L (large bowl on left - 10" deep)

D537.60.40.10R (large bowl on right - 10" deep)

OPTIONAL ACCESSORIES

(for large bowl only)

GR537SS Stainless Steel Bottom Grid

RB537SS Stainless Steel Rinsing Basket

CB537HW Wood Cutting Board

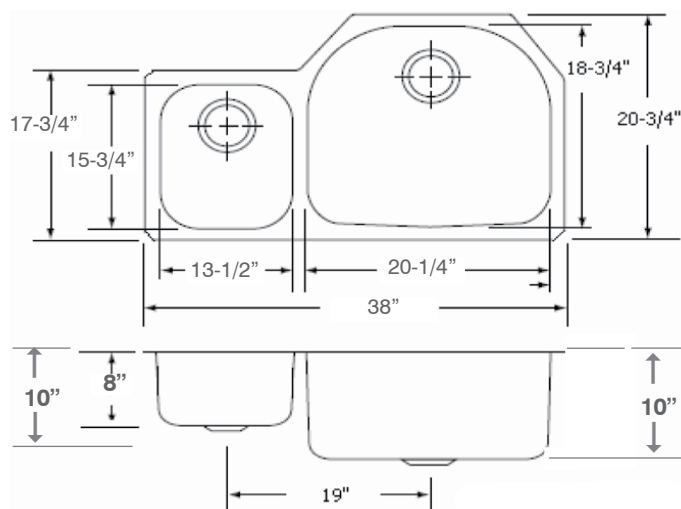
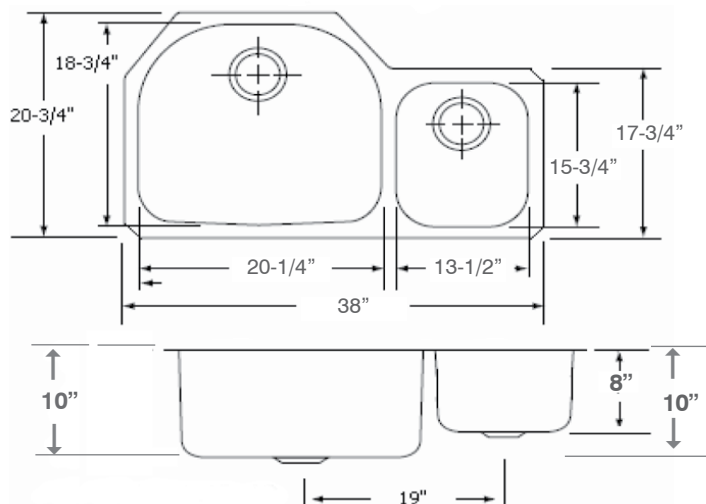
(for small bowl only)

GR345SS Stainless Steel Bottom Grid

RB345SS Stainless Steel Rinsing Basket

CB345HW Wood Cutting Board

SINK DIMENSIONS (INCHES)



Minimum Cabinet Size 39"
Ship Weight 22 Lbs

Installer Notes: Ukinox always recommends that you give the sink to the granite fabricator. If you are going to use a cutting board, provide that to the fabricator as well. Please note that we do include a template with each sink, but there can always be a slight variation. In addition, many of our templates are perforated so you can tear off the perforation for cutting board applications.



*Template and countertop mounting
clips are packed with every sink

Ukinox reserves the right to change product specifications without notice.

